

# Growth Strategy Identification Worksheet

You'll use the diagram on the following page to guide you through determining the best one or two areas of focus for your growth strategy by completing the following steps:

1. For each Umbrella Strategy, choose a Specific Strategy/Area of Focus that fits best with your business.
2. Determine the bottom line growth potential, potential implementation hurdles, and the resources needed for implementation for each Specific Strategy/Area of Focus that you selected
3. Based on the information in Step 2, determine which of the Specific Strategies/Areas of Focus you should investigate further

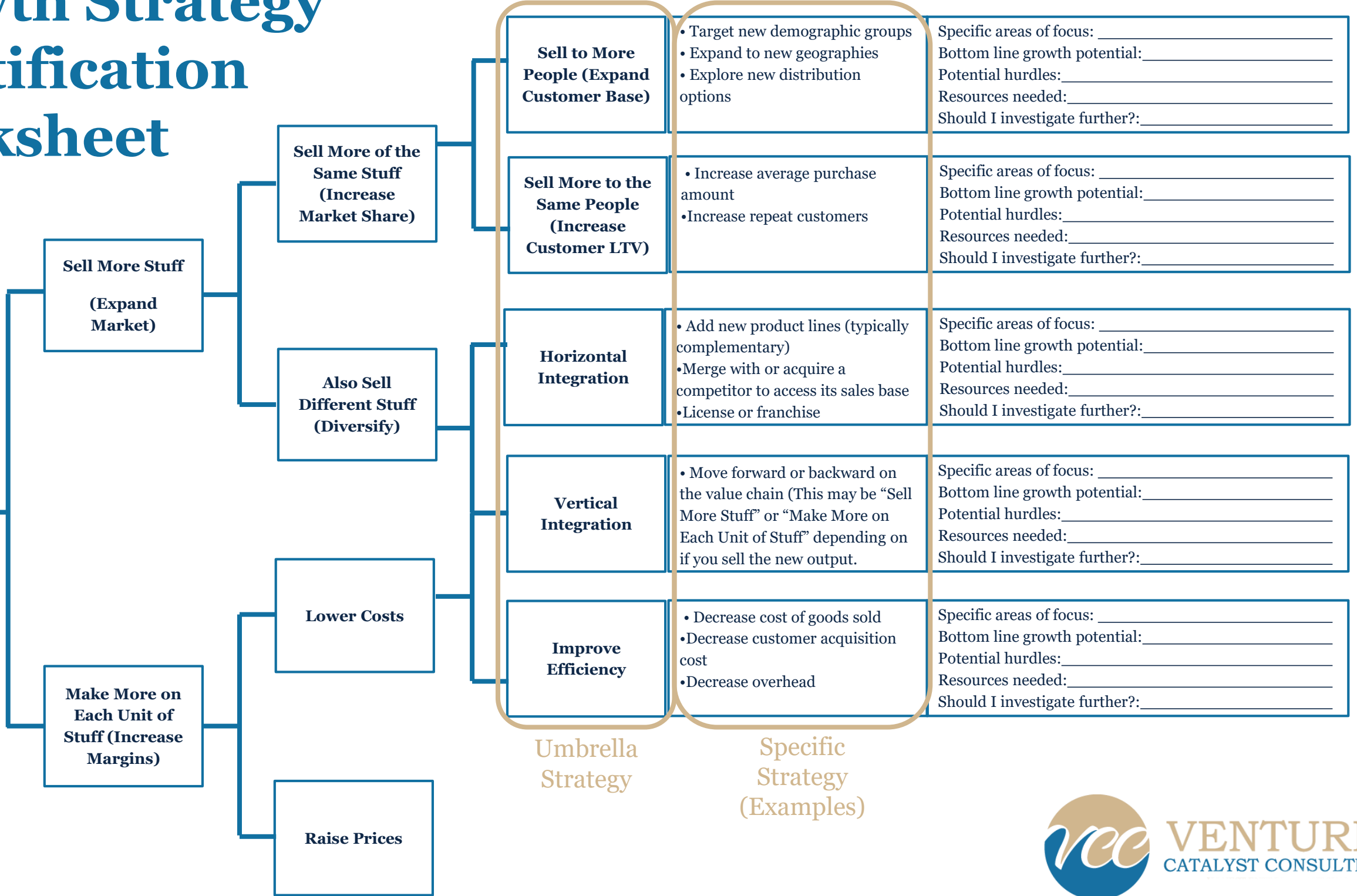
Once you've narrowed it down to 1 or 2 Specific Strategies/Areas of Focus, you'll use those as the basis for developing a complete growth strategy and set of tactics and timelines for the implementation of that strategy.

If you need assistance, please consider joining our [Business GPS](#) program or booking a [Coaching Package](#) and I would be happy to help!

Please note that this worksheet is designed to be printed on legal size paper.

# Growth Strategy Identification Worksheet

**How to Generate Bottom Line Growth**



Umbrella Strategy

Specific Strategy (Examples)